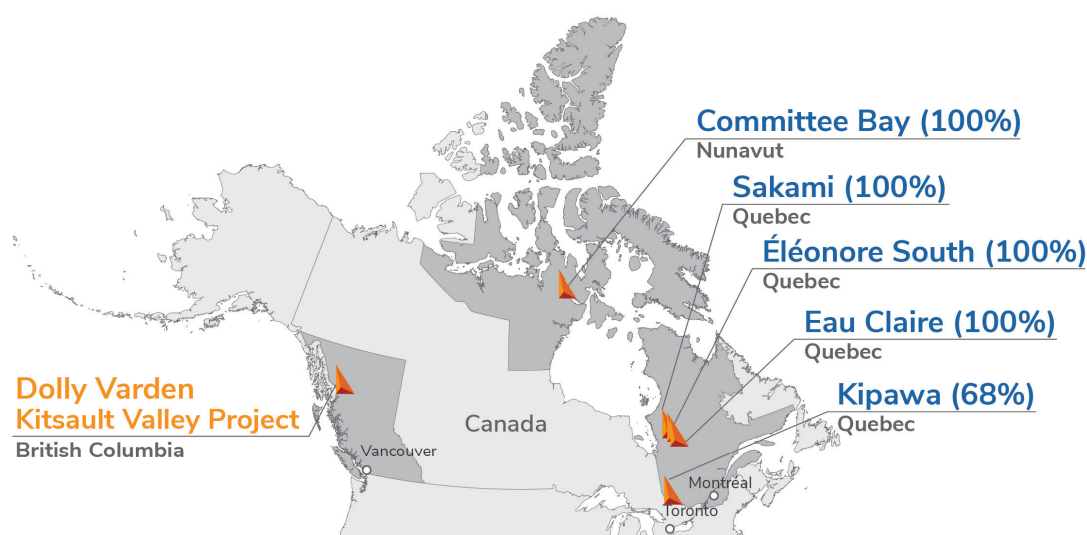


# FURY

Fact Sheet – July 2025

## Exploring for High-Grade Gold in Canada

Fury Gold Mines is a Canadian-focused gold exploration company strategically positioned in two prolific mining regions: James Bay in Quebec and the Kitikmeot Region in Nunavut. Our vision is to deliver shareholder value by steadily growing our multi-million ounce gold portfolio through additional significant gold discoveries in Canada.



## Why Invest?

**Proven team**  
with actionable knowledge  
and experience

**Growth assets**  
adding gold ounces to grow  
current resources

**High-grade gold**  
risk-reduced exploration  
strategies in stable jurisdictions

**New discovery**  
Multiple opportunities for  
large discoveries in Canada

## Upcoming Events

- CEM TSX Venture Growth – Kelowna – July 18-20, 2025
- Precious Metals Summit Beaver Creek – Beaver Creek – September 9-12, 2025
- 2025 XPLOR Convention – Montreal – October 29-30, 2025

## Analyst Coverage

CAPITAL MARKETS  
**HAYWOOD**  
SECURITIES INC.

**HCW**  
H.C. WAINWRIGHT & CO.

## Share Structure

As of Jul 14, 2025

171.7M<sub>Basic</sub>  
**Outstanding**

2.3M  
**RSU's & DSU's**

7.3M<sub>Avg. \$0.84</sub>  
**Warrants**

8.4M<sub>Avg. \$1.17</sub>  
**Options**

189.6M  
**Fully Diluted**

## Investor Contact

401 Bay Street, 16th Floor  
Toronto, ON  
Canada M5H 2Y4

Tel: 844-601-0841

Email: [info@furygoldmines.com](mailto:info@furygoldmines.com)

**TSX | NYSE-A: FURY**

**[furygoldmines.com](http://furygoldmines.com)**

# Our Projects

## Eau Claire

**Ownership:** 100%

**Location:** James Bay Region, Quebec

**Stage:** Advanced Exploration (NI 43-101 resource level)

**Resources<sup>1</sup>:** Measured & Indicated - 1,160,000 oz @ 5.64 g/t Au, Inferred - 723,000 oz @ 4.13 g/t Au

**Highlights:**

- 2024 Mineral Resource Update – 36% increase to M&I and 44.6% increase to Inferred
- Eau Claire Resource remains open for further expansion through additional drilling

## Éléonore South

**Ownership:** 100%

**Location:** James Bay Region, Quebec

**Stage:** Exploration

**Highlights:**

- Completed 5,000 m drill program targeting combined geological, geophysical, and geochemical gold anomalies within the same sedimentary rock package that hosts the Éléonore Mine

## Sakami

**Ownership:** 100%

**Location:** James Bay Region, Quebec

**Stage:** Exploration

**Highlights:**

- Conducting summer 2025 drill program focused on discovery, confirmation, and extension drilling mainly around the La Pointe Extension, La Pointe and Juliette showings

## Committee Bay

**Ownership:** 100%

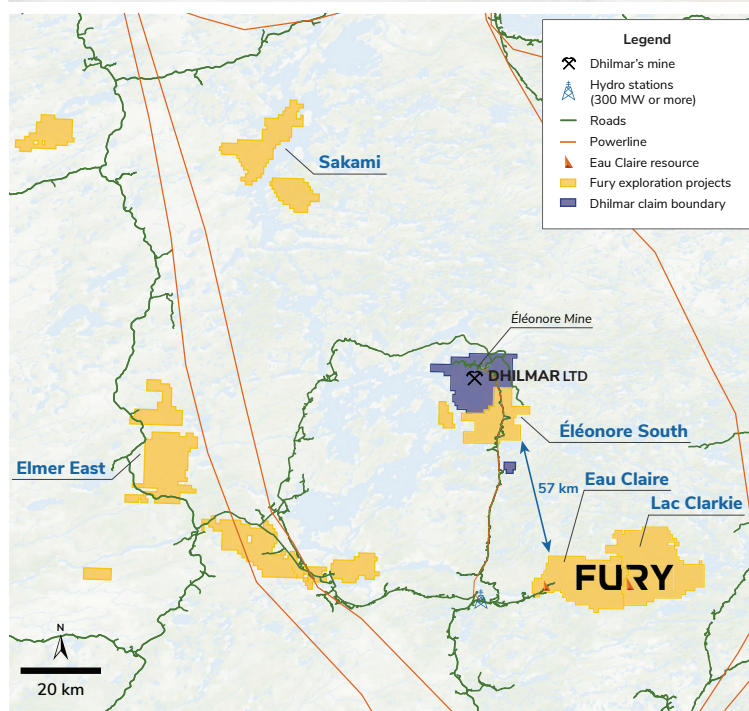
**Location:** Kitikmeot District, Nunavut

**Stage:** Exploration (NI 43-101 resource level)

**Resources<sup>2</sup>:** Indicated - 524k oz at 7.85 g/t Au  
Inferred - 720k oz at 7.64 g/t Au

**Highlights:**

- Conducting drill program in summer 2025 targeting the expansion of the Three Bluffs Shear Zone and testing regional shear zones along the Raven Shear Zone and Burro West targets



## Kipawa REE

**Ownership:** 68% Fury and 32% IQ

**Location:** Quebec

**Stage:** Historical reserves of 19.8Mt @ 0.411% TREO (Tb and Dy) within a syenite complex

## Management

Tim Clark **CEO & Director**  
Phil van Staden **CFO**  
Bryan Atkinson **SVP, Exploration**

## Board of Directors

Brian Christie **Chair**  
Steve Cook  
Tim Clark  
Saga Williams  
Michael Hoffman

1. See Eau Claire NI43-101 report "Mineral Resource Estimate Update for the Eau Claire Project, Eeyou Istchee James Bay Region of Quebec, Canada" dated June 25, 2024 filed under Fury's profile on SEDAR+. Cut-off grade 0.50 g/t Au open pit and 2.50 g/t Au underground.

2. See Committee Bay NI43-101 report "Technical Report On The Committee Bay Project, Nunavut Territory, Canada" dated September 11, 2023 filed under Fury's profile on SEDAR+. Cut-off grade 3.0 g/t Au open pit and 4.0 g/t Au underground.

Fury's SVP Exploration, Bryan Atkinson, P.Geo., and its Senior Project Geologist Valerie Doyon, P. Geo., are the Qualified Persons who have reviewed the technical contents of this document.