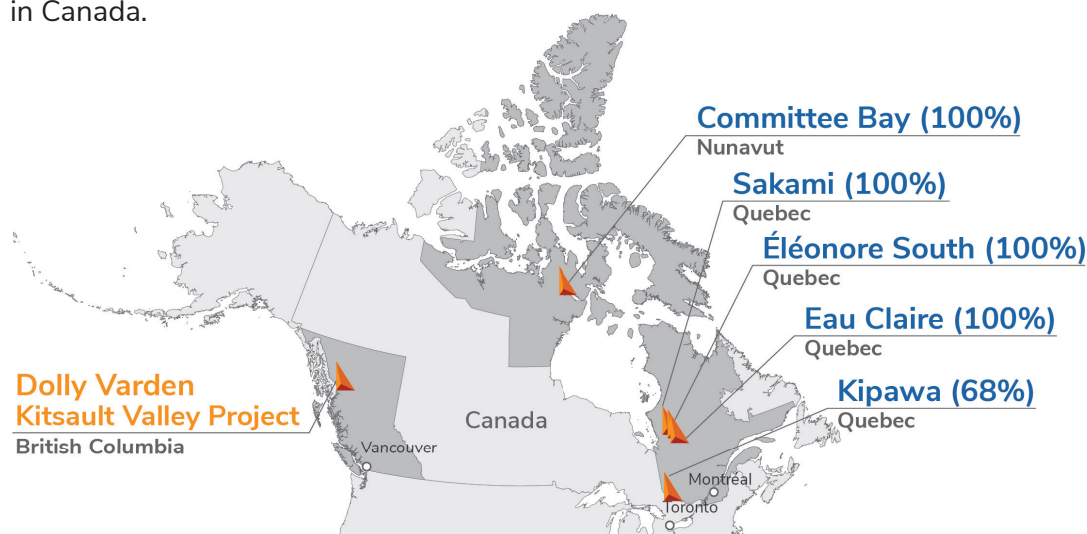


FURY

Fact Sheet – February 2026

Exploring for High-Grade Gold in Canada

Fury Gold Mines is a Canadian-focused gold exploration company strategically positioned in two prolific mining regions: James Bay in Quebec and the Kitikmeot Region in Nunavut. Our vision is to deliver shareholder value by steadily growing our multi-million ounce gold portfolio through additional significant gold discoveries in Canada.



Why Invest?

Proven team
with actionable knowledge and experience

Growth assets
adding gold ounces to grow current resources

High-grade gold
risk-reduced exploration strategies in stable jurisdictions

Path to Development
Advancing flagship Eau Claire project through drilling and environmental, permitting and sustainability work

Eau Claire Project - PEA Highlights

High Grade Project, With Low Initial Capex And Unit Costs (Base Case)

C\$554M After-tax NPV ₅ % ¹	41% After-tax IRR ¹	C\$217M Initial CapEx ²	2.5 years Payback period
834k oz LOM gold production ³	75.8k oz Avg. annual production over life of mine	US\$892/oz Total cash costs ⁴	US\$1,140/oz AISC ⁵

1. US\$2,400 per ounce base case
2. Inclusive of C\$36M contingency
3. Over an 11-year life of mine

4. Total Cash costs = OPEX / gold ounces recovered
5. AISC is calculated as the sum of treatment and refining charges, onsite operating costs, sustaining capital costs, and closure costs, divided by the quantity of ounces sold.

TSX | NYSE-A: FURY

Analyst Coverage



Management

Tim Clark **CEO & Director**

Phil van Staden **CFO**

Bryan Atkinson

SVP, Exploration

Board of Directors

Brian Christie **Chair**

Steve Cook

Tim Clark

Saga Williams

Michael Hoffman

Phillip S. Baker

Share Structure

As of Jan 30, 2026

Outstanding	190.1M Basic
RSUs & DSUs	2.7M
Warrants	13M Avg. \$1.00
Options	6.7M Avg. \$0.98
Fully Diluted	211.8M
Cash	C\$20.2M
Market Cap	C\$190.1M

Investor Contact

401 Bay Street, 16th Floor
Toronto, ON, Canada M5H 2Y4

Tel: 844-601-0841

Email: info@furygoldmines.com

furygoldmines.com

Key Projects

Eau Claire

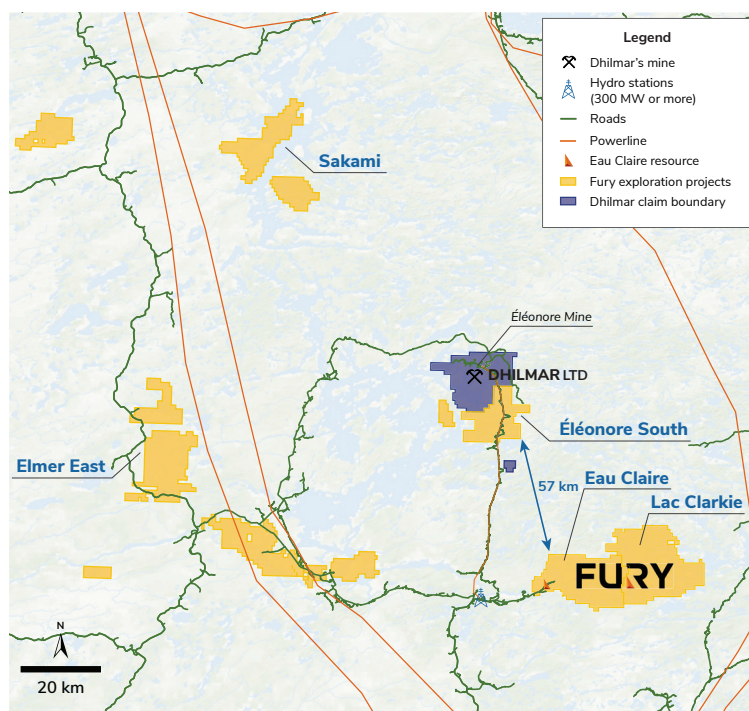
Ownership:	100%
Location:	James Bay Region, Quebec
Stage:	Advanced Exploration (NI 43-101 resource level)
Resources ¹ :	Measured & Indicated - 1,160,000 oz @ 5.64 g/t Au, Inferred - 723,000 oz @ 4.13 g/t Au
Highlights:	<ul style="list-style-type: none"> 2025 PEA Results - three development scenarios assuming US\$2,400/oz gold, with positive after-tax NPV (5%) and strong IRR: <ol style="list-style-type: none"> Base Case - full standalone operation (on-site processing): NPV₅: \$554M, IRR: 41% Hybrid Case - two years of toll milling, followed by on-site processing: NPV₅: \$610M, IRR: 53% Toll Milling Case - full off-site processing at third-party facility: NPV₅: \$639M, IRR: 84% Continue resource expansion
Next Steps:	<ul style="list-style-type: none"> Improve continuity of resource ounces outside of the PEA mineable portion of the resource Continue work on vein geometries to further improve economics on the project Continue to advance the Eau Claire deposit through environmental baseline as directed by COMEV, tailings, metallurgical, and geotechnical test work

Committee Bay

Ownership:	100%
Location:	Kitikmeot District, Nunavut
Stage:	Exploration (NI 43-101 resource level)
Resources ² :	Indicated - 524k oz at 7.85 g/t Au Inferred - 720k oz at 7.64 g/t Au
Highlights:	<ul style="list-style-type: none"> Conducted drill program in summer 2025 targeting the expansion of the Three Bluffs Shear Zone and testing regional shear zones along the Raven Shear Zone and Burro West targets

Sakami

Ownership:	100%
Location:	James Bay Region, Quebec
Stage:	Exploration (NI 43-101 resource level)
Resources ³ :	Inferred - 825k oz at 1.07 g/t Au
Highlights:	<ul style="list-style-type: none"> Conducted summer 2025 drill program focused on discovery, confirmation, and extension drilling



Upcoming Catalysts

- Executive winter drill program (between 12,000 and 13,000 metres of drilling) at Eau Claire
- Finalize 2026 exploration program at Committee Bay, which would include up to 5,000 metres of drilling to test the high-grade mineralization at the Three Bluffs deposit and to drill test advanced regional targets

- See Eau Claire NI43-101 report "Mineral Resource Estimate Update for the Eau Claire Project, Eeyou Istchee James Bay Region of Quebec, Canada" dated June 25, 2024 filed under Fury's profile on SEDAR+. Cut-off grade 0.50 g/t Au open pit and 2.50 g/t Au underground.
- See Committee Bay NI43-101 report "Technical Report On The Committee Bay Project, Nunavut Territory, Canada" dated September 11, 2023 filed under Fury's profile on SEDAR+. Cut-off grade 3.0 g/t Au open pit and 4.0 g/t Au underground.
- See Fury Gold Mines news release dated December 8, 2025)

Fury's SVP Exploration, Bryan Atkinson, P.Geo., and its Senior Project Geologist Valerie Doyon, P. Geo., are the Qualified Persons who have reviewed the technical contents of this document.